



Chinee Wig Co., Ltd

Product Catalog

www.china-wig.com





About Us

Chinee Wig Co., Ltd is a professional enterprise specializing in the research, development, production, sales, and OEM customization of wigs and hair products. Our factory covers an area of over 1,200 square meters and is equipped with advanced production facilities and a team of 200 skilled professionals. Through strict quality control procedures and extensive production experience, we provide high-quality, competitively priced hair products, earning trust and support from clients worldwide.

We possess well-equipped testing facilities and strong technical capabilities to ensure every product meets high-quality standards. All our hair products are made from 100% natural human hair, without any mixing of synthetic fibers and without chemical treatment. This guarantees the natural appearance, safety, and ultimate comfort of our products, meeting the high expectations of customers for premium wigs.

As a company offering OEM services, we can produce wigs and hair products in various specifications, styles, and colors based on clients' designs and requirements. Our monthly production capacity includes over 100,000 pieces of hair extensions and more than 60,000 wigs. These products are exported to over 20 countries and regions, including North America, Europe, Australia, Africa, Japan, and Brazil, providing professional and personalized solutions to our global clients.

Chinee Wig Co., Ltd adheres to the business philosophy of "Quality First, Customer Foremost" and continuously innovates to create greater value for customers. We are committed to becoming a leading brand in the global hair products industry and look forward to working with more partners to build a brighter future together.



Scalable Production Capacity

Whether you require small batches or large-scale production, our advanced facilities and skilled team ensure timely delivery without compromising quality.



AMORE™ REMY HUMAN HAIR*



Espresso Dark Chocolate



Cappuccino Toffee Brown



Brown Spice Honey Brown



Moonlight Blonde Root Moonlight Blond-LR

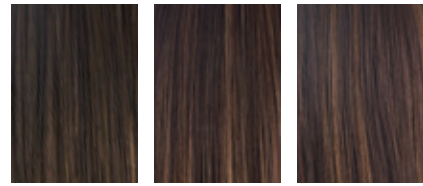


Starlight Blonde Golden Wheat

BRUNETTES



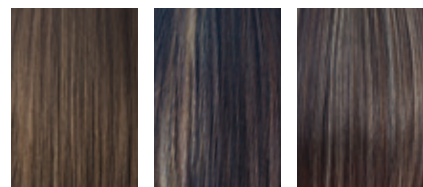
Espresso Cappuccino Dark Chocolate



Mocha Brown Coffee Latte Java Frost



Ginger Brown Toasted Brown Kahlua Blast



Medium Brown Caramel Brown Chocolate Frost

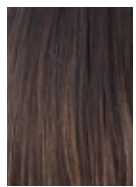


Iced Mocha Light Chocolate Golden Brown

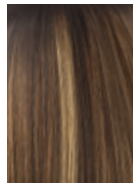


Almond Rocka Marble Brown Maple Sugar

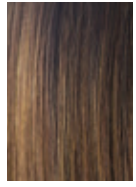
HYBRANT BRUNETTES



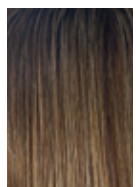
Coffee Latte-R



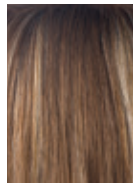
Almond Rocka-R



Marble Brown-R



Iced Mocha-R



Maple Sugar-R



Honey Brown-R

BLONDS



Honey Wheat Mochaccino



Butter Pecan Harvest Gold



Creamy Toffee Strawberry Swirl



Spring Honey/Spring Honey-T Frosti Blond



Ice Blond Vanilla Lush



Gold Blond Sugar Cane

HYBRANT BLONDS



Mochaccino-R



Spring Honey-R



Creamy Toffee-R



Champagne-R



Rose Gold-R



Sugar Cane-R

REDS



Mulberry Brown Burgundy



Burgundy Rosa Garnet Glaze



Dark Rust Bronzed Brown



Cayenne Spice Rusty Red



Auburn Sugar Chestnut



Ginger Highlight Raspberry Ice

HYBRANT REDS



Raspberry Ice-R



Auburn Sugar-R



Cooper Glaze-R

GRAYS



Midnight Pearl



Silver Stone™



51



Silver Mink



Simply White

HYBRANT GRAYS



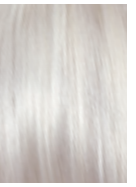
Sandy Silver™



39

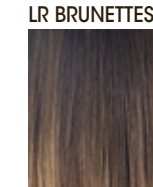


56



Smoky Gray-R

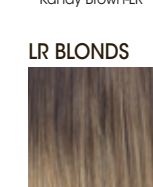
LONG ROOTED COLORS



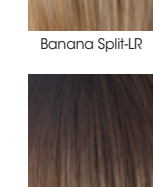
LR BRUNETTES



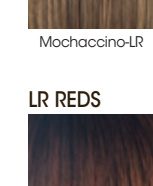
Marble Brown-LR



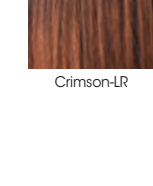
Kandy Brown-LR



Mochaccino-LR



LR REDS



Crimson-LR



Milk Tea-LR



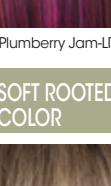
Macadamia-LR



Creamy Toffee-LR



Plumberry Jam-LR



SOFT ROOTED COLOR



MELTED BLENDS

PASTELS



Pastel Blue-R



Bubblegum-R



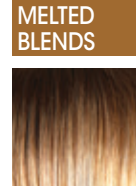
Lavender Blush-R



Seaglass-R

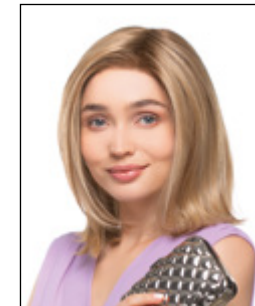
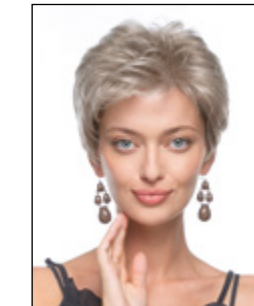
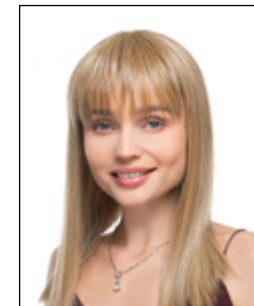
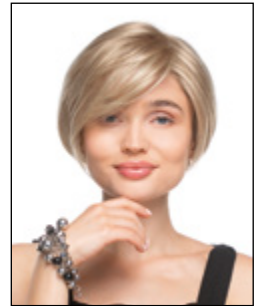
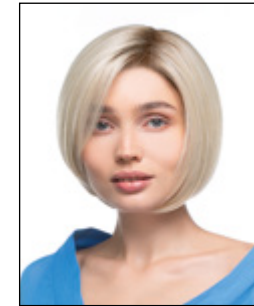


Snowy Sapphire-R



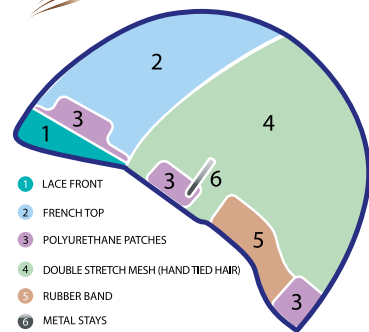
Melted Sunset

EXHIBIT, Custom wig -

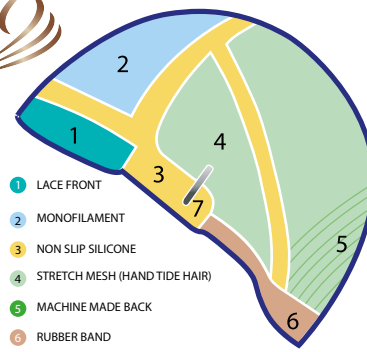




OUR WIG STYLES



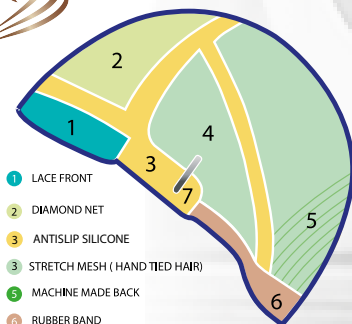
- 1 LACE FRONT
- 2 FRENCH TOP
- 3 POLYURETHANE PATCHES
- 4 DOUBLE STRETCH MESH (HAND TIED HAIR)
- 5 RUBBER BAND
- 6 METAL STAYS



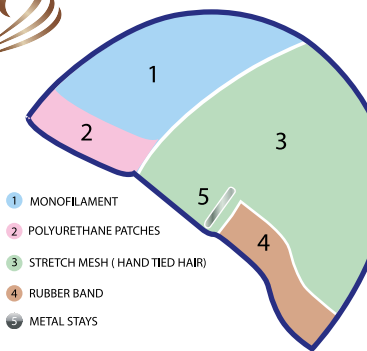
- 1 LACE FRONT
- 2 MONOFILAMENT
- 3 NON SLIP SILICONE
- 4 STRETCH MESH (HAND TIED HAIR)
- 5 MACHINE MADE BACK
- 6 RUBBER BAND
- 7 METAL STAYS



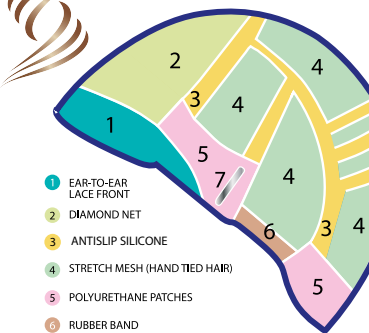
- 1 LACE FRONT
- 2 FRENCH TOP
- 3 ANTISLIP SILICONE
- 4 DOUBLE STRETCH MESH (HAND TIED HAIR)
- 5 RUBBER BAND
- 6 METAL STAYS



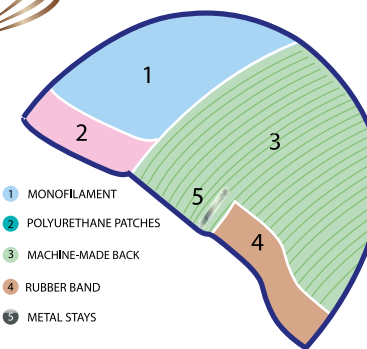
- 1 LACE FRONT
- 2 DIAMOND NET
- 3 ANTISLIP SILICONE
- 4 STRETCH MESH (HAND TIED HAIR)
- 5 MACHINE MADE BACK
- 6 RUBBER BAND
- 7 METAL STAYS



- 1 MONOFILAMENT
- 2 POLYURETHANE PATCHES
- 3 STRETCH MESH (HAND TIED HAIR)
- 4 RUBBER BAND
- 5 METAL STAYS



- 1 EAR-TO-EAR LACE FRONT
- 2 DIAMOND NET
- 3 ANTISLIP SILICONE
- 4 STRETCH MESH (HAND TIED HAIR)
- 5 POLYURETHANE PATCHES
- 6 RUBBER BAND
- 7 METAL STAYS



- 1 MONOFILAMENT
- 2 POLYURETHANE PATCHES
- 3 MACHINE-MADE BACK
- 4 RUBBER BAND
- 5 METAL STAYS





GIADA

100% EUROPEAN REMY HAIR WITH INTACT CUTICLE



Hair Length
Front 30 cm / Crown 30 cm / Sides 30 cm / Nape 30 cm
Overall Length 45 cm
Weight 175 gr

NATURAL CAP

- Breathable – 100% hand-tied
- 3 layer lace mesh known as French Top with invisible knotting
- Lace front
- polyurethane patches for an optional use of double-sided tape

AVAILABLE COLORS (European Hair Color Ring)



ALEXIS

100% REMY HUMAN HAIR WITH INTACT CUTICLE



Hair Length
Front 27 cm / Crown 27 cm / Sides 27 cm / Nape 27 cm
Overall Length 46 cm
Weight 150 gr

CONFIDENCE CAP

- Breathable
- Strong hold with Anti-slip Silicone strips
- Diamond net
- Non-toxic and hypoallergenic
- Lace Front

AVAILABLE COLORS (European Hair Color Ring)





GIADA

100% EUROPEAN REMY HAIR WITH INTACT CUTICLE



Hair Length
Front 30 cm / Crown 30 cm / Sides 30 cm / Nape 30 cm
Overall Length 45 cm
Weight 175 gr

NATURAL CAP

- Breathable – 100% hand-tied
- 3 layer lace mesh known as French Top with invisible knotting
- Lace front
- polyurethane patches for an optional use of double-sided tape

AVAILABLE COLORS



METAL STAYS



ALEXIS

100% REMY HUMAN HAIR WITH INTACT CUTICLE



Hair Length
Front 27 cm / Crown 27 cm / Sides 27 cm / Nape 27 cm
Overall Length 46 cm
Weight 150 gr

CONFIDENCE CAP

- Breathable
- Strong hold with Anti-slip Silicone strips
- Diamond net
- Non-toxic and hypoallergenic
- Lace Front

AVAILABLE COLORS





JOELLE

100% HUMAN HAIR



Hair Length
Front 19 cm / Crown 21 cm / Sides 18 cm / Nape 9 cm
Weight 109 gr

CONFIDENCE CAP

- Breathable
- Strong hold with Anti-slip Silicone strips
- Monofilament top
- Non-toxic and hypoallergenic
- Lace Front

AVAILABLE COLORS



4/6

8/32

4R30/33

8R10/12

9R28/25

10R14/26



GIULIA

100% HUMAN HAIR



Hair Length
Front 13 cm / Crown 20 cm / Sides 18 cm / Nape 9 cm
Weight 96 gr

CONFIDENCE CAP

- Breathable
- Strong hold with Anti-slip Silicone strips
- Monofilament top
- Non-toxic and hypoallergenic
- Lace Front

AVAILABLE COLORS (European Hair Color Ring)



2/4

4/6

801

2R32/34

8R10/12

8R14/25



SARAH

100% REMY HUMAN HAIR WITH INTACT CUTICLE



Hair Length
Front 32 cm / Crown 35 cm / Sides 35 cm / Nape 34 cm
Overall Length 50 cm
Weight 165 gr

COMFORT CAP

- Extra-light and breathable cap
- 100% hand-tied
- Monofilament top

AVAILABLE COLORS



4/6 8 830 637 8R14/25 6R16/613

METAL STAYS



VALERY

100% HUMAN HAIR



Hair Length
Front 27 cm / Crown 26 cm / Sides 18cm / Nape 11 cm
Weight 100 gr

COMFORT CAP

- Extra-light and breathable cap
- 100% hand-tied
- Monofilament top

AVAILABLE COLORS (European Hair Color Ring)



4 10/12 637 9R28/25 9R14/24 614R



HELEN

100% REMY HUMAN HAIR WITH INTACT CUTICLE



Hair Length
Front 30 cm / Crown 30 cm / Sides 32 cm / Nape 12 cm
Weight 137 gr

BASIC CAP

- Extremely resistant
- Breathable
- Monofilament top

AVAILABLE COLORS



2/4

4/6

8

8R10/12

10R14/26

8R14/25



PENELOPE

100% EUROPEAN REMY HAIR WITH INTACT CUTICLE

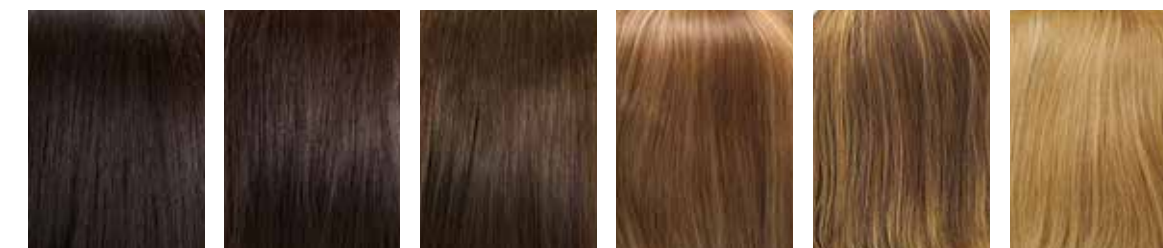


Hair Length
Front 40 cm / Crown 40 cm / Sides 40 cm / Nape 40 cm
Overall Length 55 cm
Weight 215 gr

NATURAL CAP

- Breathable – 100% hand-tied
- 3 layer lace mesh known as French Top with invisible knotting
- Lace front
- polyurethane patches for an optional use of double-sided tape

AVAILABLE COLORS (European Hair Color Ring)



2/4

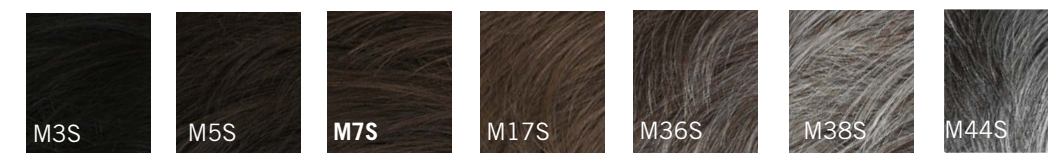
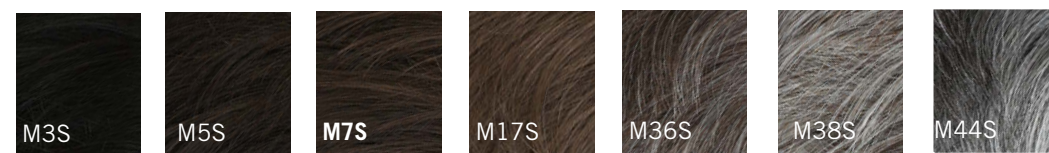
4/6

8

10/12

8/14

12/14/16

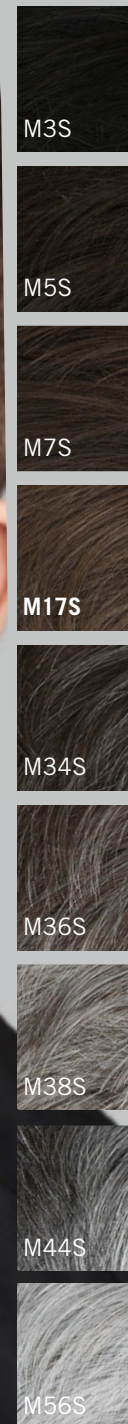
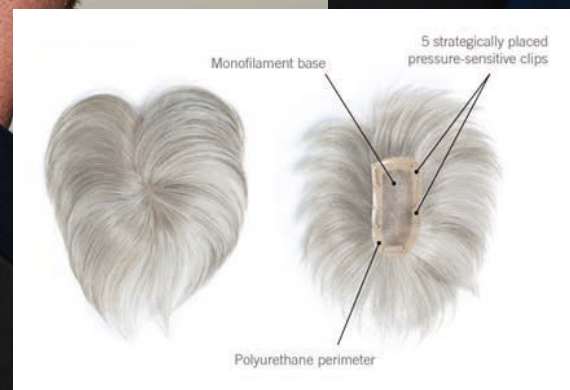




High Tech EFFECT

Haarlänge/hair length: ca. 15 cm

- 100% Synthetic High Heat Fiber
- PU Rand mit 5 Clips
- Federleichtes Füllhaarteil



Customizable wigs/Men's Wigs



0.05mm Ultra-Thin Skin V-Ring Hair System
Material: 100% natural human hair or synthetic options.



Bleached French Lace Front Stock Mono Hair System With Poly Around
Material: 100% natural human hair or synthetic options.



French lace medium density stock men's wig
Material: 100% natural human hair or synthetic options.



HXTL full lace human hair Breathable wig for men
Material: 100% natural human hair or synthetic options.



HXTL full lace human hair Breathable wig for men
Material: 100% natural human hair or synthetic options.



Stock 0.03mm Ultra Thin Skin V Looped Mens Hair System Toupee
Material: 100% natural human hair or synthetic options.



High Tech Toupet Classic
Größe/Size: ca. 23,5 x 18 cm
Haarlänge/hair length: ca. 7 cm



High Tech Toupet Straight
Größe/Size: ca. 24 x 18 cm
Haarlänge/hair length: ca. 11 cm

Farbkarte Herrentoupees
Color card mens toupees





Chinee Wig Co., Ltd

Product Catalog

www.china-wig.com

Office: 6F,ShunJing Trade Center,No.855,Industrial Avenue South, Haizhu District,
Guangzhou, China(Mainland)